

THE LINK

Battersea

*A Public Realm Vision for Battersea,
which aims to create:*

- *A Sense of Place and Identity*
- *Improved Streetscape and Open Spaces*

Making streets where people and vehicles can co-exist,

But where vehicles respect and defer to non-motorised users

Contents

- The challenges
- What are the objectives?
- What is the project?
- Key elements - early interventions
- Key elements - incremental delivery

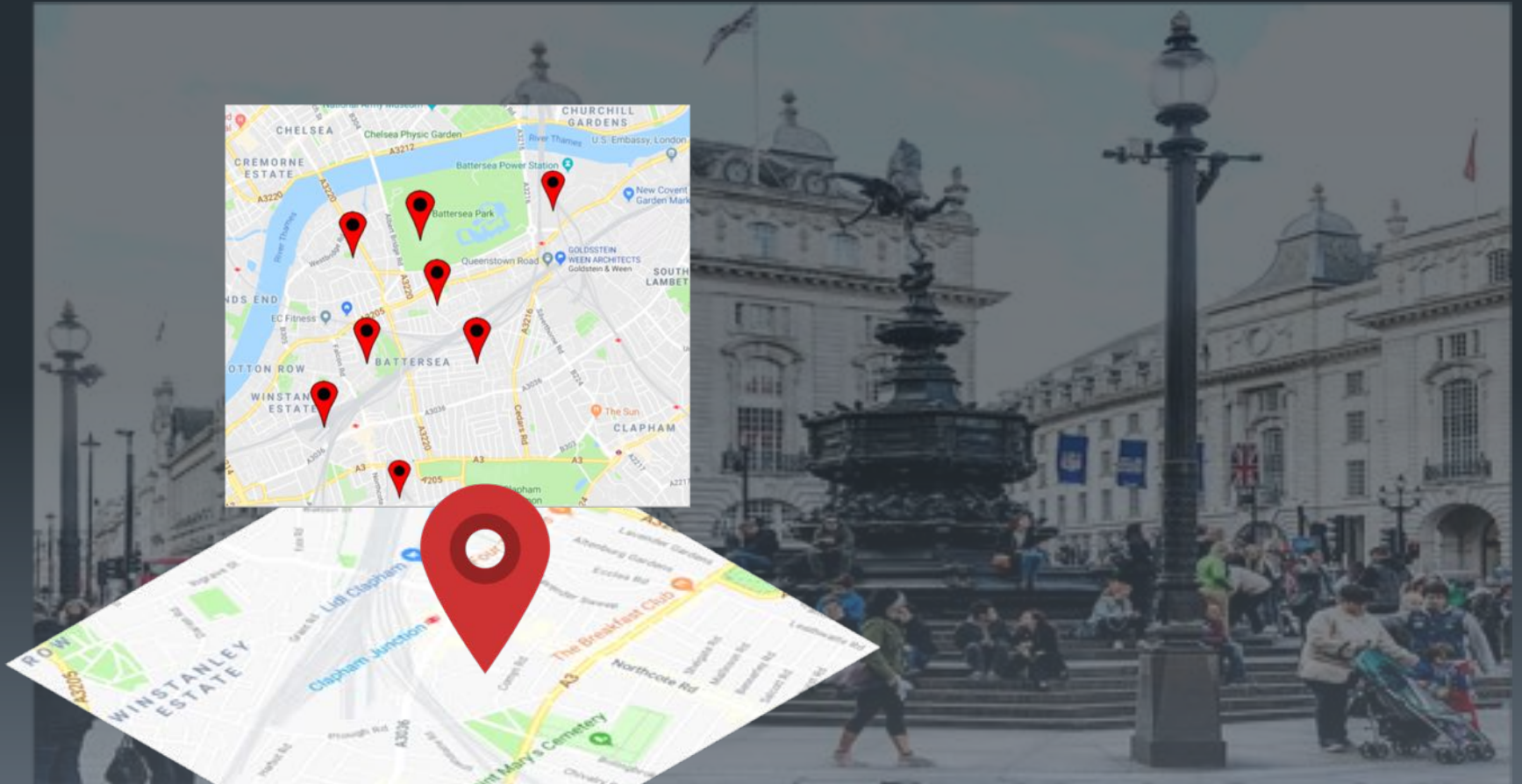
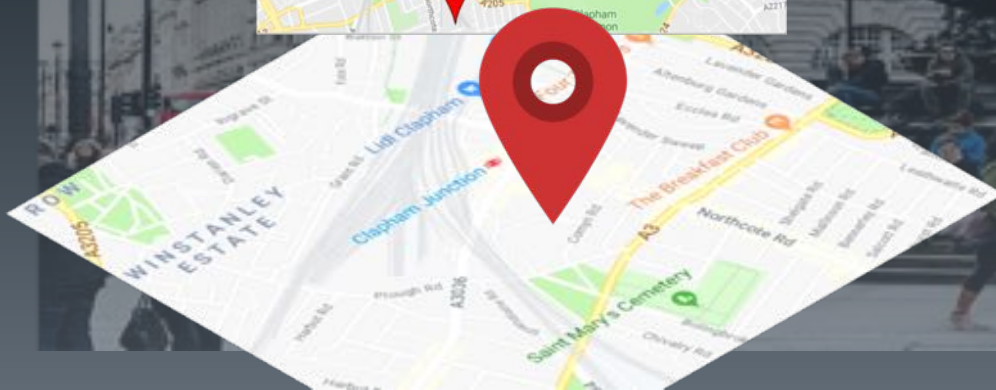
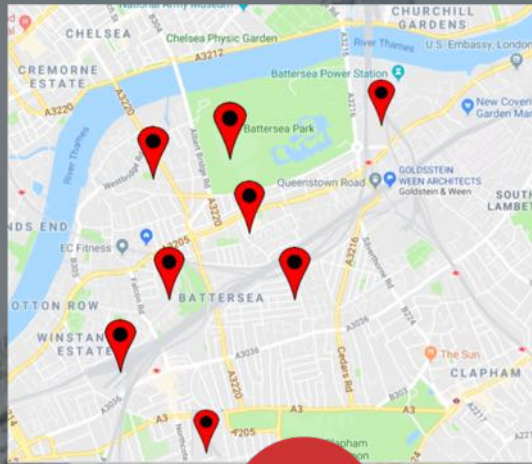


The Challenges

Battersea suffers from a lack of identity

Where is Battersea?

So make Battersea a Place and Put it on the map



The Challenges

What is Battersea's History?

Bring to life Battersea's People & Places

THE LINK - BATTERSEA



John Archer
London's first black mayor



1st Barron of
Battersea



"THE FALCON TAVERN," 1789.
From a Painting by J. Nixon in the British Museum.

THE FALCON PUB – OWNED BY MR DEATH
THIS ETCHING OF UNDERTAKERS DRINKING
ON THE WAY TO THE CEMETARY LEAD TO A
PAINTING 'AT DEATH'S DOOR'
Origin of the saying?

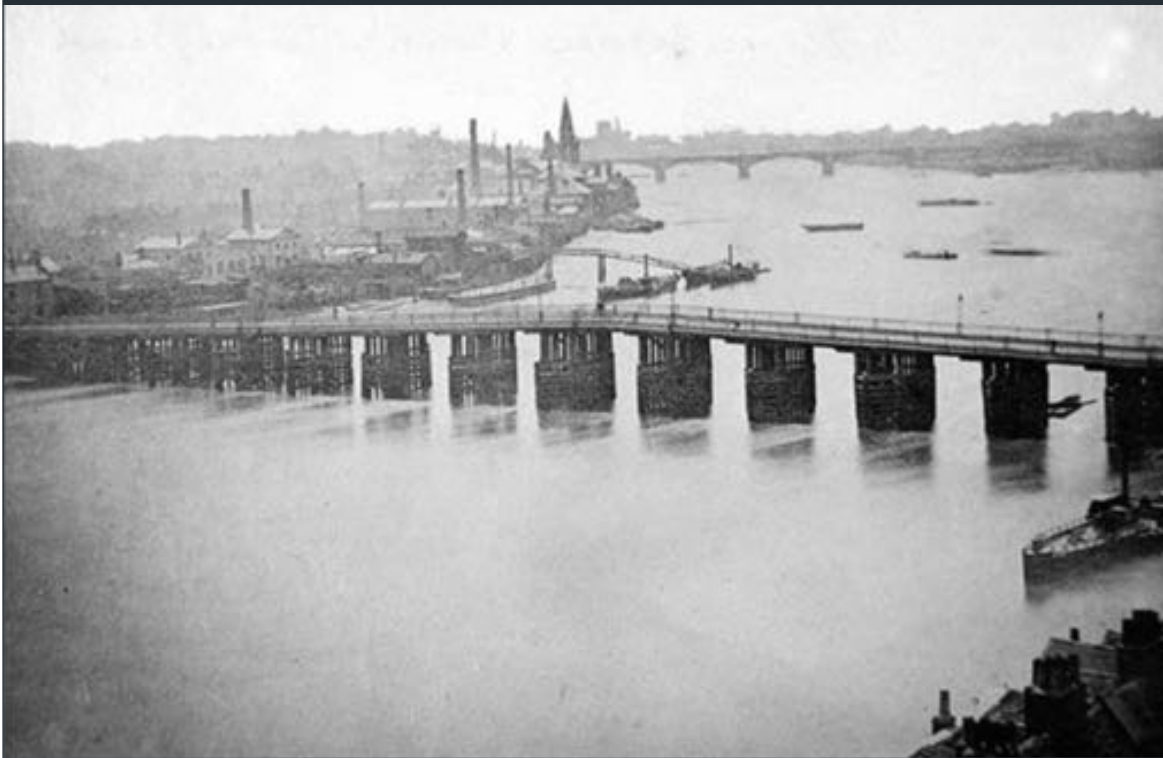
GOLDSTEIN WEIN ARCHITECTS



The Challenges

Battersea has lost its Rivers

Revive connections to
The Thames and Falcon Brook



The Challenges

Poor Quality Public Realm & Streetscape



The Challenges

No place to Dwell

THE LINK - BATTERSEA



What are the objectives?

- Create beautiful:
- Places & Spaces
 - Pocket Parks
 - Mini Squares



PALEY PARK NYC Robert Zion, Cultural Landscape Foundation



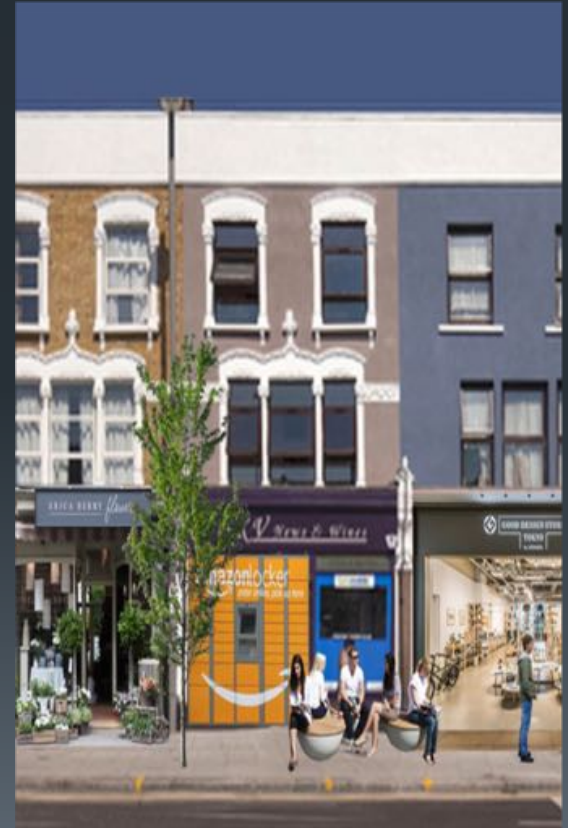
What are the objectives?

To deliver urban enhancements that target:

- People
- Environment
- Local Economy

THE LINK - BATTERSEA

GOLDSTEIN WEIN ARCHITECTS



What are the objectives?

To Encourage Sustainable Urban Practices:

- Active Travel
- Better Air Quality
- Sustainable Local Economy
- Supporting Social Inclusion
- Facilitating Recycling & Reducing Waste



What is the project?

A VISION for:

- *Healthy Streets*
- *A place for all the community*
- *A place to move through*
- *A place to visit*
- *A place to repose in*
- *A place that is clean and safe*

A VEHICLE to engage:

Community and Council in public discussion



What is the project?

THE LINK - A ROUTE

(1.8 miles / 3 Km)

An attractive, healthy, urban street

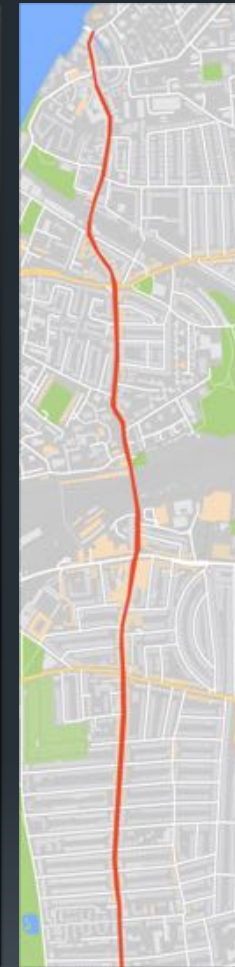
A place that says "This is Battersea"

That links Battersea together

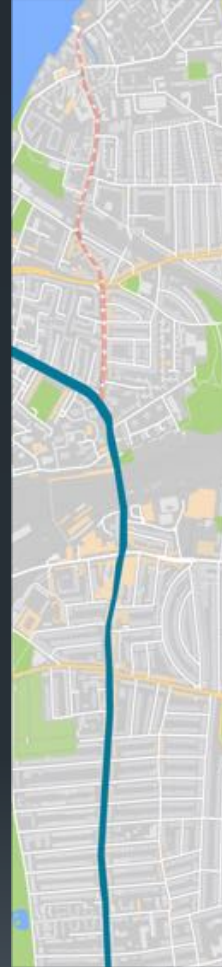
That evokes Battersea's rich history

That connects to Battersea to The Thames

That revives the memory of the Falcon Brook



THE ROUTE



FALCON
BROOK
COURSE

That revives the memory of the Falcon Brook

That connects to Battersea to The Thames

What is the project?

A continuous *Link*

Northcote Road to St Mary's Church and The Thames



Links 5 streets



What is the project?

Placemaking:

- High quality Streetscape
- Tree planting
- Urban planting
- Water features
- Benches
- Creating places to Be In

Reducing WASTE

- Recycling facilities
- Reduce single use plastic by providing water fountains

Streets fit for WALKING

- Links and Connections
- Safe crossings

Streets fit for CYCLING

- Safe and protected route
- Logical and direct
- Cycle parking facilities

Safe and Pleasant at NIGHT

- Innovative lighting
- Light features



What is the project?

Use high quality design to create identity

- A place you want to visit
- A place you want to dwell in



Key elements - Early interventions

Along the Entire Route - 4 elements link all streets

To create a **special identity** for Battersea and to link the disparate parts of Battersea



1 DISTINCTIVE TREES
Between existing trees



2 INNOVATIVE LIGHTING scheme



3 PROTECTED CYCLE ROUTE



4 20 MPH (all 5 streets)

Key elements - Early intervention 1

Iconic trees along all 5 streets

Create the sense of route



Intersperse a distinctive species, consistently spaced, amongst the existing trees

Key elements - Early intervention 2

Innovative modern lighting along whole route

Create magic at night



Key elements - Early interventions 3 & 4

All 5 streets:

- Protected **Cycle Way**



- **20 MPH**



Incremental Interventions

that can happen over time

Key elements - incremental delivery

Safe Pedestrian Crossings

Crossings that are places for **People**
(that vehicles are allowed to pass though...)

Creating a sense that this is the domain of people



Key elements - incremental delivery

Positive approach to cycling:

Cycle parking facilities



Secure, conveniently located and integrated

Key elements - incremental delivery

Drinking fountains

'The Battersea Drink'



To discourage single use plastic

Key elements - incremental delivery

Water Features

Evoke Battersea's connections to its Rivers



Key elements - incremental delivery

Light Features – Night-time magic



Key elements - incremental delivery

Urban planting – Nature and Colour



Key elements - incremental delivery

Urban planting - For functional separation



Key elements - incremental delivery

ENCOURAGE RECYCLING



Scan and get credit-note
to spend in local shops



Provide public recycling



Key elements - incremental delivery

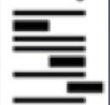
Public toilets

Provision is a social equity issue



Key elements - incremental delivery

Places to sit - 'The Batterseat'



Key elements - incremental delivery

Places to Dwell



Key elements - incremental delivery

Links

Connect adjoining communities
Filtered neighbourhoods



Key elements - incremental delivery

Links – Upgrade grotty passages

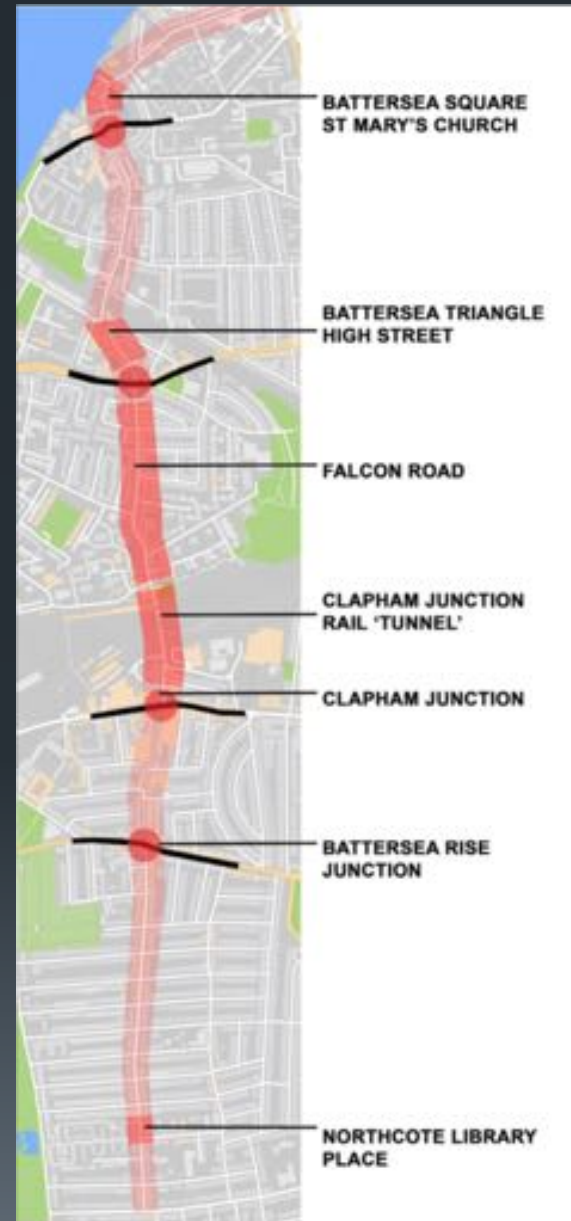


Key elements - incremental delivery

Junction Treatments

People-friendly crossings

The Route is crossed by
4 heavily trafficked roads
(3 Trunk roads)



Key elements - incremental delivery

Junction: Battersea Square / Battersea Church Road

THE LINK - BATTERSEA



Problems:

Narrow carriageway
Narrow pavement

Reduce Battersea Church Road To One-way
Widen pavement, provide cycle lane, tree planting,
safe pedestrian crossing



Key elements - incremental delivery

Junction: Falcon Road / York Road

Junction design should reflect desire lines

THE LINK - BATTERSEA



Key elements - incremental delivery

Battersea 'Triangle' Gateway to Market

Mini Plaza – a place to rendez-vous



Some thoughts for specific areas...

Battersea Rise Junction

Make this a place that says:
This is firstly a place for People
(where cars can pass through)



Key elements - incremental delivery

Street interventions

People-friendly places

Encourage recycling

Reduce single waste plastic

(provide drinking fountains)



Key elements - incremental delivery

Falcon Road



Too Narrow pavement!



Unnecessarily wide pavement!

Widen pavement on East side in front of shops to allow pavement activity

Some thoughts for specific areas...

Falcon Road

Bus stop + Rail underpass



Chaotic bus manoeuvring
Weaving traffic
No formal pedestrian crossing
(central island regularly knocked over)



Key elements - incremental delivery

Falcon Road Bus stop

Crossing / widened pavement / cycle lane



Key elements - incremental delivery

Falcon Road - Providence House



Youth club

Flexible semi-public forecourt for mixed activities

Key elements - incremental delivery

Falcon Grove / Falcon Road

Islamic Cultural Centre and Mosque



Widen pavement + raised platform junction
Create congregation space for Mosque
(side street is a dead-end street with low traffic)

Key elements - incremental delivery

Network Rail Underpass

THE LINK - BATTERSEA



THIS UNDERPASS DESTROYS BATTERSEA

- THE AIR QUALITY IS AMONGST THE WORST IN WANDSWORTH
- IT CREATES SEVERANCE BETWEEN NORTH AND SOUTH BATTERSEA

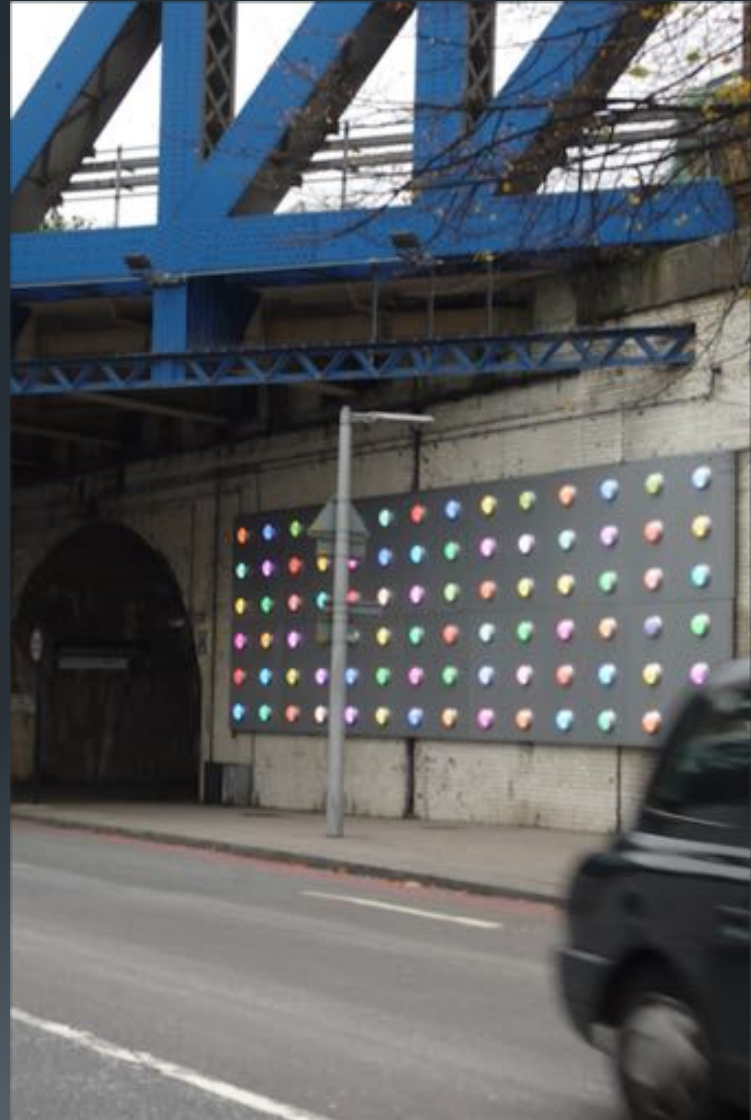
Line walls, improve lighting and ventilation, widen pavement

Opportunity to create a mural about the historic Falcon Brook (now in a pipe)

Key elements - incremental delivery

Network Rail Underpass

Interim option could be
light installations



Key elements - incremental delivery

Economic opportunity

THE LINK - BATTERSEA



Consider opportunities to enhance local businesses



Key elements - incremental delivery

Northcote Library Place

Create a civic place
by narrowing the carriage way for a small section



THE LINK

Battersea

Contact:

CAMILLA WEEN

E: camilla.ween@gmail.com

M: 07860 892 089

GOLDSTEIN WEEN ARCHITECTS

UNIT 56

15-17 INGATE PLACE

LONDON SW8 3NS

T: 020 7498 2111

WWW.goldsteinween.com

ARTWORKS: INIGO JIMÉNEZ + MARK GOLDSTEIN

